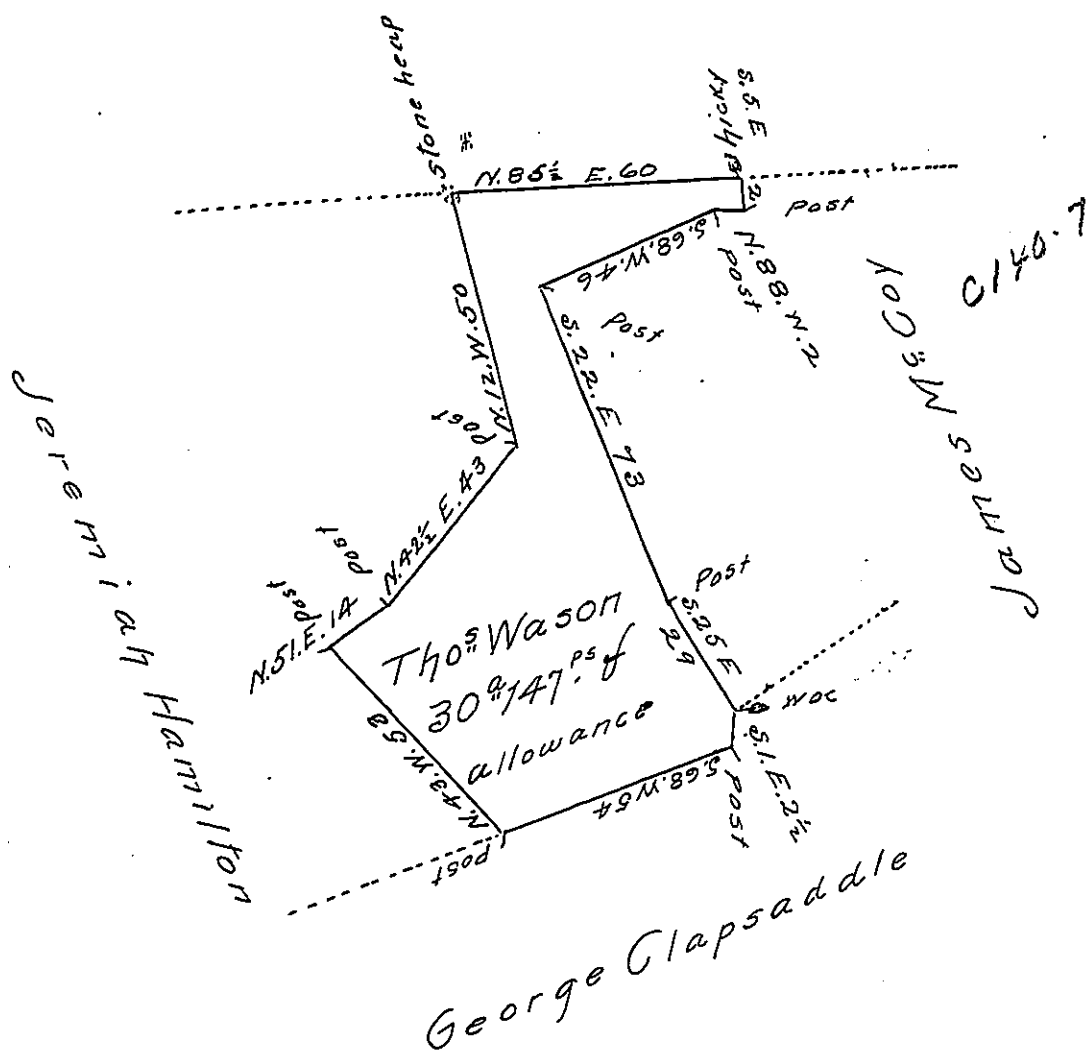


83 194

heirs of Thomas Wason in right of James Glenn



The above described Tract of Land situate in Peters Township Franklin County containing Thirty acres one hundred & forty seven perches and allowance of six pCent for Roads &c was surveyed the 23<sup>rd</sup> day of December 1806 in pursuance of a Warrant granted to Thomas Wason bearing date the 2<sup>nd</sup> day of April 1787.

p- Tho. Kirby D.S.

To Samuel Cochran Esq:  
Surveyor General of Pennsylvania

IN TESTIMONY that the above is a copy of the original remaining on file in the Department of Internal Affairs of Pennsylvania, made conformably to an Act of Assembly approved the 16th day of February, 1833, I have hereunto set my Hand and caused the Seal of said Department to be affixed at Harrisburg, this seventeenth day of November 1904

*Lucas P. Pearson*  
Secretary of Internal Affairs.